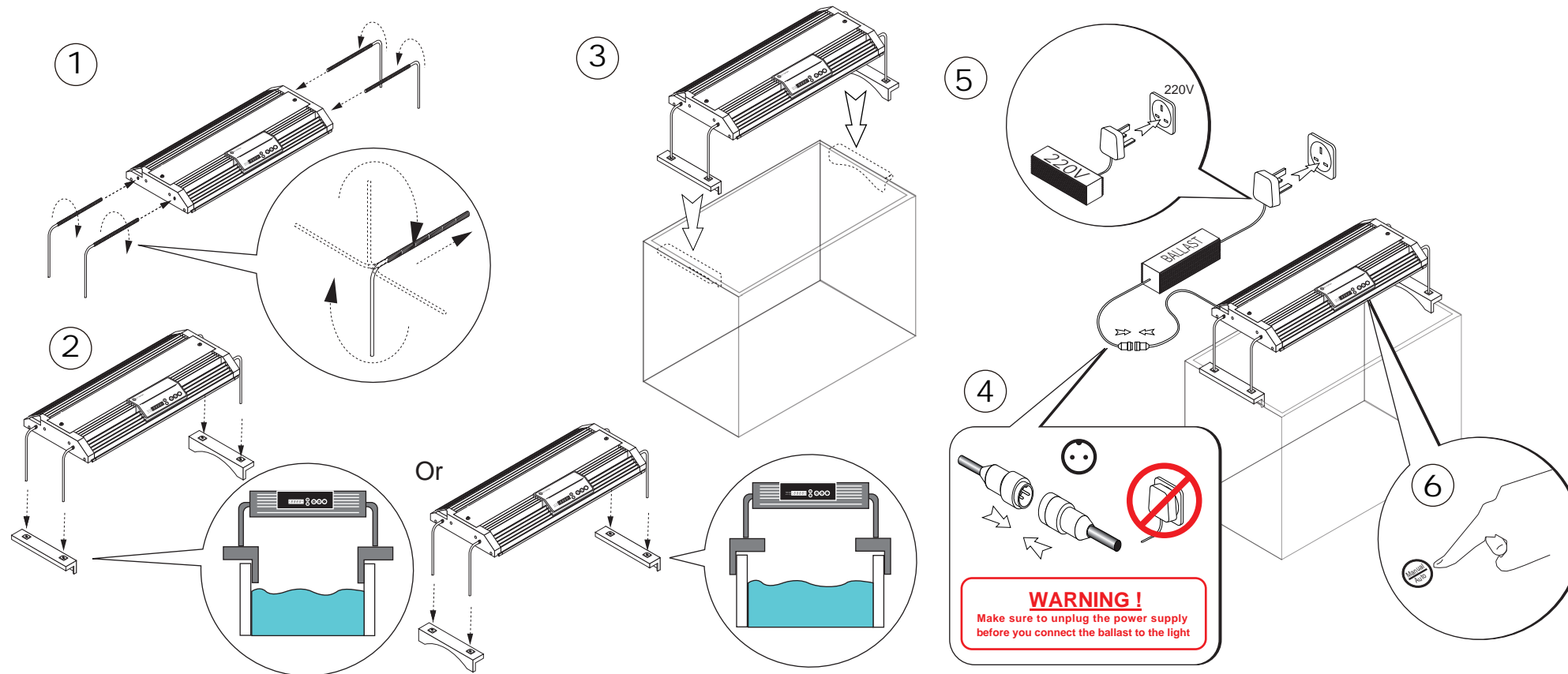


KR94

INSTALLATION METHOD (Adjustable width tank mounts)



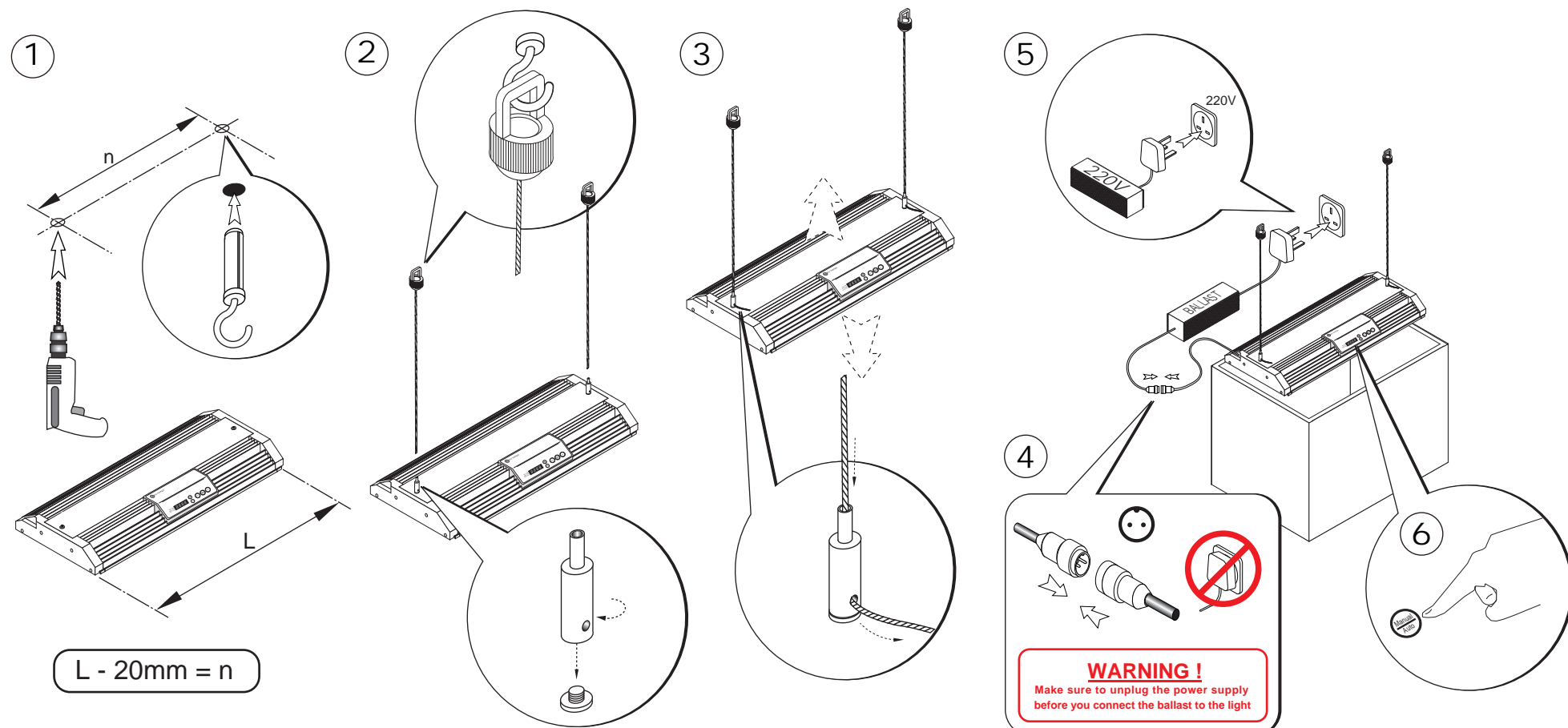
eco-lamps Inc.
ISO 14001:2008



ISO 14001:2008
EMS 554643

KR94

INSTALLATION METHOD (Ceiling mounts)



FEATURES

- PC / VHO / T5 / MH Replacement
- 5 + Years Expectant LED Life
- Heat is radiated away from water reducing or eliminating the need for chillers
- Replace metal halide with LED system that is more energy efficient
- LED light penetration allows outstanding coral growth
- Easy installation

SAFETY INSTRUCTIONS

- Make sure the power cord meets all relevant local safety standards.
- DO NOT let the power cord become damaged or frayed.
- Place the light near a wall outlet where the power cord can be easily unplugged.
- DO NOT place the light near heaters.
- DO NOT extend the wire. Doing this might affect the operation of the light.
- DO NOT expose to direct sunlight or excessive heat.

⚠ WARNING

- Before cleaning the light, make sure you have unplugged the power cord from the electrical socket. Doing this will prevent electrical shock.
- DO NOT handle the plug with wet hands. Doing this might cause an electrical shock.
- DO NOT pull on the middle of the power cord. Doing this may cause electrical shock.

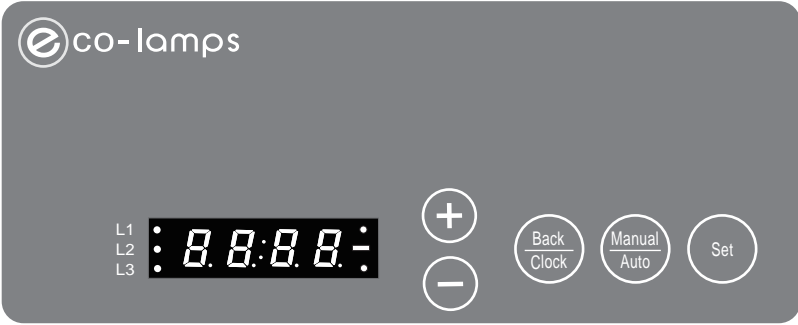
⚠ CAUTION

- DO NOT attempt to service the KR94 yourself. Doing this may render this warranty void.

USER’S GUIDE

Control panel overview

The KR94 control panel keys.



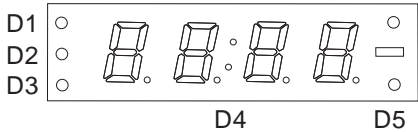
1. Five functional keys

- **+ or –**
Press to scroll through the menus and options.
- **Back / Clock**
Use this key to edit the time / go back.
- **Manual / Auto**
You can quickly and easily change the light between Manual mode or Auto mode.
- **Set**
Use this key to confirm or enter.

2. LED Display and indications

The LED display gives you information about the light stages and time.

- **D1 LED**
Light 1 indication
- **D2 LED**
Light 2 indication
- **D3 LED**
Light 3 indication
- **D4 LED**
Second indication
- **D5 LED**
Percentage indication



3. General Information

- **Manual Mode**
 - ① Press **Manual/Auto** button to enter the manual mode. (LED shows: *HRnd*)
 - ② Press **Back/Clock** button to set the time. (See ③)
 - ③ Press **Set** button to enter manual. (LED shows: *HR00*)
 - ④ Press **+/-** button to select *HR00*, *HR01*, *HR02*, *HR03*

Light mode (Manual mode)	
<i>HR00</i>	All lights off
<i>HR01</i>	Light 1, light2 & light3 can be set from 0% to 100%
<i>HR02</i>	Light 1 & light 2 100% (fixed)
<i>HR03</i>	Light 3 100% (fixed)

HR01 setting:

Press **Set** button to enter light 1 setting, LED shows:



Press **+/-** button to select range 0% to 100%.

Press **Set** button to enter light 2 setting, LED shows:



Press **+/-** button to select range 0% to 100%.

Press **Set** button to enter light 3 setting, LED shows:



Press **+/-** button to select range 0% to 100%.

Press **Set** button to saved & exit.

Screen shows *HRnd* and “real time” alternate in 6s.

■ **Auto Mode *E000***

- ① Press **Manual/Auto** button to enter the Auto mode. (LED shows: *R000*)
- ② Press **Back/Clock** button to set the time. (See ③)
- ③ Press **Set** button to enter “t1” (LED shows: *E000*) Press **Set** button to set the “t1” beginning time *07:00*. The first 2 digits blinking, press **+/-** to select the “hour”. Press **Set** button to go to “minute” *07:00*. The last 2 digits blinking, press **+/-** to select the “minute”. Press **Set** button to go to intensity setting.

Intensity setting

Press **Set** button to enter light 1 setting, LED shows:



Press **+/-** button to select range 0% to 100%.

Press **Set** button to enter light 2 setting, LED shows:



Press **+/-** button to select range 0% to 100%.

Press **Set** button to enter light 3 setting, LED shows:



Press **+/-** button to select range 0% to 100%.

Press **Set** button to saved & enter to the “t2”.

■ **Auto Mode *E200***

- ① Press **Set** button to set the “t2” beginning time *10:00*. The first 2 digits blinking, press **+/-** to select the “hour”. Press **Set** button to go to “minute” *10:30*. The last 2 digits blinking, press **+/-** to select the “minute”. Press **Set** button to go to intensity setting.
After intensity setting, press **Set** button to saved & enter to the “t3”.

■ **Auto Mode *E300***

- ① Press **Set** button to set the “t3” beginning time *13:00*. The first 2 digits blinking, press **+/-** to select the “hour”. Press **Set** button to go to “minute” *13:30*. The last 2 digits blinking, press **+/-** to select the “minute”. Press **Set** button to go to intensity setting.
After intensity setting, press **Set** button to saved & enter to the “t4”.

■ **Auto Mode *E400***

- ① Press **Set** button to set the “t4” beginning time *18:00*. The first 2 digits blinking, press **+/-** to select the “hour”. Press **Set** button to go to “minute” *18:30*. The last 2 digits blinking, press **+/-** to select the “minute”. Press **Set** button to go to intensity setting.
After intensity setting, press **Set** button to saved & enter to the “t5”.

■ **Auto Mode *E500***

- ① Press **Set** button to set the “t5” beginning time *24:00*. The first 2 digits blinking, press **+/-** to select the “hour”. Press **Set** button to go to “minute” *24:30*. The last 2 digits blinking, press **+/-** to select the “minute”. Press **Set** button to go to intensity setting.
After “t5” setting, the LED shows: *EndE* (ending time).
Press **Set** button to set up the ending time *23:00*. The first 2 digits blinking, press **+/-** to select the “hour”. Press **Set** button to go to “minute” *23:00*. The last 2 digits blinking, press **+/-** to select the “minute”. Once the set up is complete, the LED will shows *R000*.



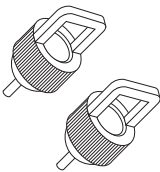
Note

Error set up

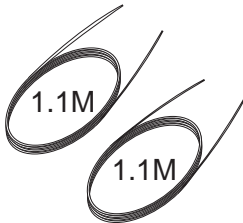
“t1” start at 07:00, “t2” start at 06:00, “t3” start at 09:00

In this case the “t2” will passed, you may press **Back/Clock** to set right time for “t2”.

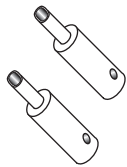
ACCESSORIES



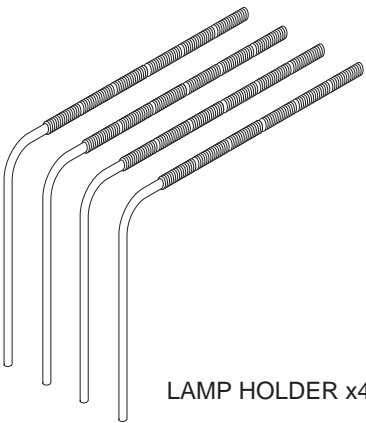
WIRE BRIDGE x2



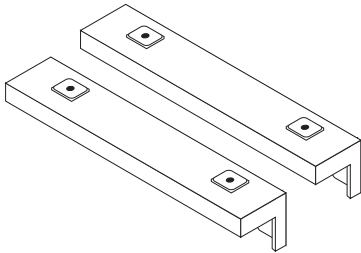
STEEL WIRE x2



WIREWAY TUBE x2



LAMP HOLDER x4



TANK BRACKET x2