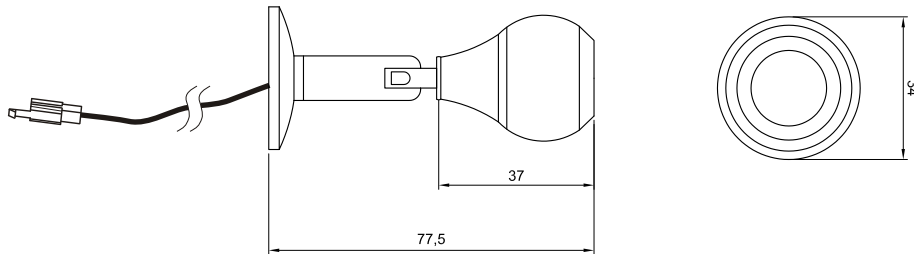


## SL1V Series

### Ordering Informations

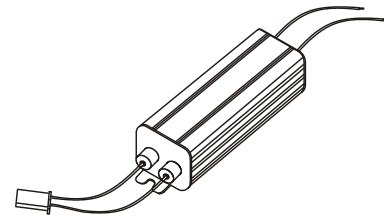
Model No.	Color	Size	Light Source	Luminous Intensity
SL1VWW1W	Warm White (3,000-3,500K)	φ77.5x34mm	1W	90-100Lm
SL1VWE1W	Cool White (6,000-6,500K)	φ77.5x34mm	1W	100-110Lm

### Outline Drawing



### Features

- Aluminum casing with special extrusions design
- Energy saving
- Eco-friendly product
- Long life time (up to 50,000hours)
- High luminance
- Low power consumption
- RoHS compliant
- Low surface heat against hand touch
- No UV or IR damage light sensitive items



\* The dimensional outline drawings are common in (SL1VWW1W & SL1VWE1W )

Unit: mm

Parameter	Rating value
Forward Current	350mA
Input voltage	AC 85-260V 50/60Hz
Installation Diameter	N/A
Light source	1x1W
Operating temperature	-40 - +70deg
Viewing angle	30deg
Weight	70g

### Important:

- \* Do not look permanently to the light sources.
- \* Specified performance measured in 85-260V range.

